

STANDARD PRESSURE GAUGES DN 40, 50 & 63

Usable with liquid or gaseous fluids that do not attack chemically the alloys of copper, do not present a high stickiness and do not crystallize.

Their preferable application is in pneumatic and hydraulic circuits, compressors, filters and pressure regulators. They fulfil norm CE.

Constructive and functional characteristics:

Accuracy:

Ø40 Type 2,5 according to EN 837-1.

Ø50 & Ø63 Type 1,6 according to EN 837-1.

Ranges: -1..0 to 0..40 bar for DN 40 and DN 50, -1..0 to 0..400 bar for DN 63 or any other equivalent unit of pressure or vacuum, standard ranges according to DIN 16 128.

Ambient temperature: -20...+60°C.

Process fluid temperature: Max. +60°C.

Temperature error:

Additional error when the temperature of the pressure element deviates from 20°C. +/-0,3% every 10 °C of change.

Working pressure: Max 75% of E.S.

Temporary overpressure: Not applicable.

Process connection Racord: In brass.

Elastic element: Phosphoric bronze. In "C" for ≥ 40 bar scales. In spiral for >40 bar scales.

Case: In ABS plastic.

Window: Clear plastic.

Movement: In brass.

Pointer: Painted black aluminium.

Optional extras:

Tin-silver welding.

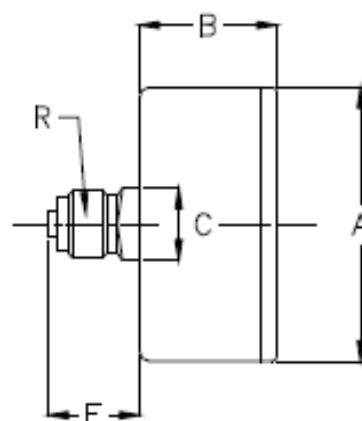
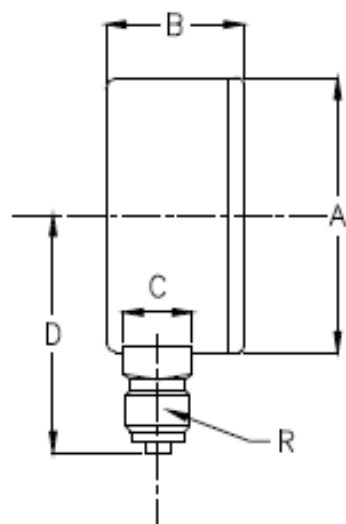
Glass window.

Others accuracy ranges.



This publication does not try to establish the bases of a contract and the company keeps the right to modify without previous notice the design and the specifications of the instruments, in accordance with his politics of continued development.

DIMENSIONS



LOWER CONNECTION TYPE					
DN	A	B	C	D	R
40	42	25	11x11	27,5	1/8"
50	53	28	14x14	48	1/4"
63	63,5	28	14x14	51	1/4"

DIMENSIONS
(mm)

BACK CONNECTION TYPE					
DN	A	B	C	E	R
40	42	25	11x11	14	1/8"
50	53	28	14x14	19	1/4"
63	63,5	28	14x14	19	1/4"

This publication does not try to establish the bases of a contract and the company keeps the right to modify without previous notice the design and the specifications of the instruments, in accordance with his politics of continued development.