

mod.GMDX 90°C

Getto multiplo
quadrante asciutto-acqua calda
Multi jet-super dry-hot water



pag 58



Disponibile con dispositivo lancia impulsi
Available with impulse emitter device

pag 64

HYDROLINK

Collegabile al sistema radio Hydrolink tramite RFM-TXE
Connectable to Hydrolink system via RFM-TXE



Mod. GMDX

Getto multiplo, quadrante asciutto, lettura diretta. Realizzato nella versione per acqua calda (90°C) nei calibri da ø 15 a 50 mm (1/2" ±2"). Esclusi rischi di corrosione e sedimentazione. Dispositivo antimagnetico su richiesta. Garanzia di lunga durata ed elevata precisione.

Contatore omologato a norme MID R50-H.

Mod. GMDX

Vielfachwasserstrahl, trocken es Zifferblatt, Direktab lesung. Produziert in der Versionen Warmwasser (90°C) in den Durchmesser von 15 bis 50 mm (1/2 Zoll ±2 Zoll). Die Risiken von Rost und Ablagerungen sind ausgeschlossen. Anti-magnetische Vorrichtung auf Anfrage. Garantiert lange Haltbarkeit und erhöhte Genauigkeit. **Zugelassener Zähler für MID Standards R50-H.**

Mod.GMDX

Multi jet, dry dial, direct reading. Produced in the hot water version (90°C) in the diameters 15 to 50 mm (1/2" ±2"). Risks of corrosion and sedimentation free. Antimagnetic protection upon request. Long durability and elevated precision guaranteed. **Approved according to MID standards R50-H.**

Mod. GMDX

Jets multiples, cadran sec à lecture directe, disponible en version eau chaude (90°C) et du calibre 15 au calibre 50 mm (de 1/2" à 2"), exclus tous problèmes de corrosion et d'incrustation, équipé d'une protection antimagnétique sur demande, fiabilité dans le temps et précision élevée. **Approuvé selon les normes de MID R50-H.**

Mod. GMDX

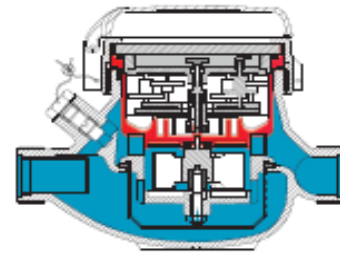
Chorro múltiple, cuadro seco, lectura directa. Realizado en las versiones para agua caliente (90°C) en los calibres de ø 15 a 50mm (1/2" ±2"). Libre de riesgos de corrosión y sedimentación. Bajo pedido se suministra con dispositivo antimagnético. Garantía de larga duración y elevada precisión. **Contador homologado por las normas MID R125-H.**

Мод. GMDX

Многоструйный счетчик горячей (90°C) воды с сухим квадрантом и прямым считыванием. Выпускается диаметрами условного прохода от 15 до 50 мм (1/2" - 2"). Исключены риски коррозии и образования осадка. Антиманитная защита - по запросу. Гарантия долговечности и высокой точности. **Сертифицирован по стандартам MID R50-H.**

Caratteristiche tecniche - Technical features

Calibro Size	DN	mm In	15 (1/2")	20 (3/4")	25 (1")	32 (1 1/4")	40 (1 1/2")	50 (2")
Portata di sovraccarico Overload flowrate	Q4	m³/h	3,12	5	7,87	12,5	20	31,25
Portata permanente Permanent Flow Rate	Q3	m³/h	2,5	4	6,3	10	16	25
Portata di transizione Transitional flow rate	Q2	l/h	80	128	202	320	512	800
Portata minima Min flow rate	Q1	l/h	50	80	126	200	320	500
Sensibilità Sensitivity		l/h	10	14	17	27	46	75
Lettura minima Min reading		l	0,05	0,05	0,05	0,05	0,05	0,05
Lettura massima Max reading		m³	99.999	99.999	99.999	99.999	999.999	999.999
Pressione max ammissibile Max admissible pressure MAP		bar	16	16	16	16	16	16



MID R50, Acqua calda 30°C÷90°C, Trascinamento Magnetico
Lettura diretta a rulli numeratori,
Orologeria superiore impermeabile, Con coperchio

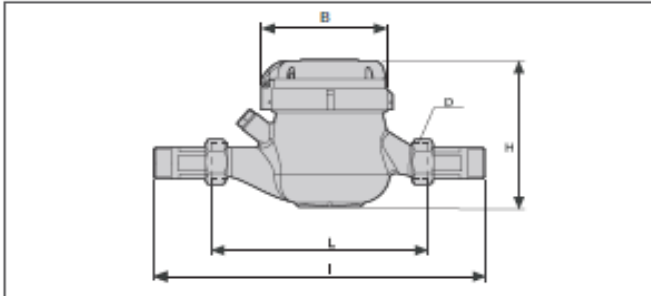
MID R50, Hot Water 30°C÷90°C, Magnetic transmission
Direct reading by numerical rolls,
Water proof mechanism, With lid

Su richiesta - Upon request

Dispositivo antimagnetico

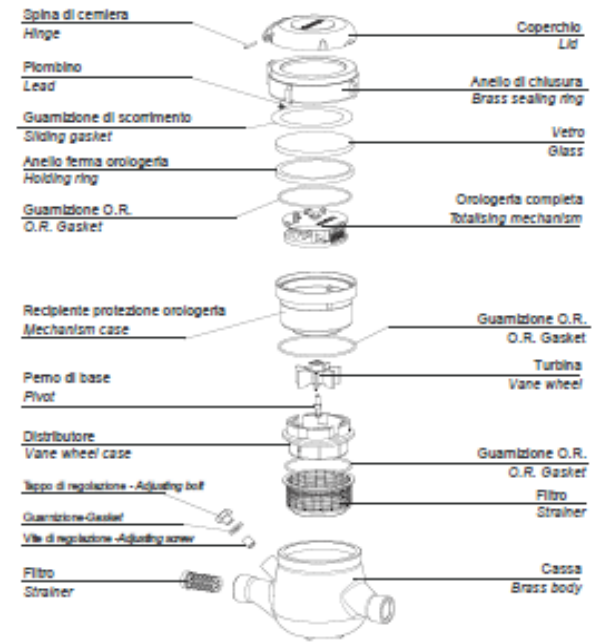
Anti magnetic protection device on request

Dimensioni e pesi - Dimensions and Weights

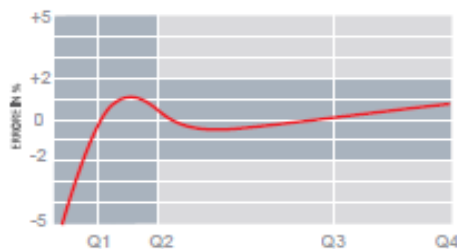


Calibro Size	mm In	15 (1/2")	20 (3/4")	25 (1")	32 (1 1/4")	40 (1 1/2")	50 (2")
L	mm	145-165-190	190	260	260	300	300
I	mm	225-245-270	290	360	380	440	460
H	mm	109	111	117	117	153	172
B	mm	100	100	104	104	126	160
D	mm	3/4"	1"	1 1/4"	1 1/2"	2"	2 1/2"
Net Weight	kg	1,35	1,45	2,04	2,11	4,58	7,25

I contatori DN 50 possono essere forniti flangiati secondo UNI EN 1092-1:2007 PN 16
The DN50 meters can be supplied flanged according to UNI EN 1092-1:2007 PN 16



Curva tipica degli errori dei contatori a turbina Typical error curve of turbine meters



Curva delle perdite di carico dei contatori da DN 15 a 20 Head loss curve from DN 15 to 50 water meters

