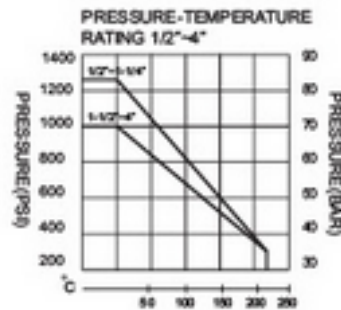
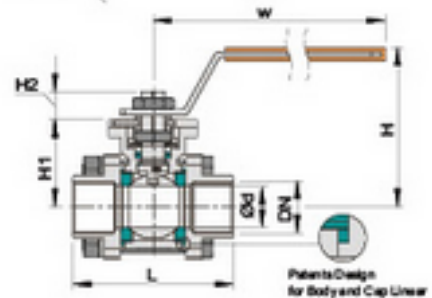
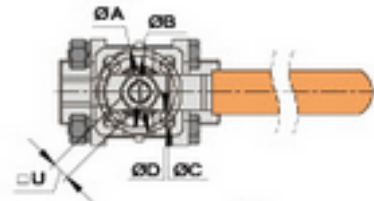


Ball Valve Full Port ISO-Direct Mounting Pad 3-pc Design



Features:

- Spring Ball Seat for Self-Adjust
- Full Port
- Locking Device Handle Upon Request
- Blow-Out Proof Stem
- V-Ring Packing Sealing
- Balance Hole in Ball Slot
- Design Standard: ASME B16.34
- Anti-Static Device
- Butt-Welding end/Soket End Available
- Testing Standard: API 598/SP-110



PRESSURE TESTING

STANDARD PRESSURE	1000PSI
SHELL PRESSURE TESTING	10.4Mpa
WATER SEAL TESTING	7.6Mpa
AIR SEAL TESTING	0.4-0.7Mpa

(unit: mm)

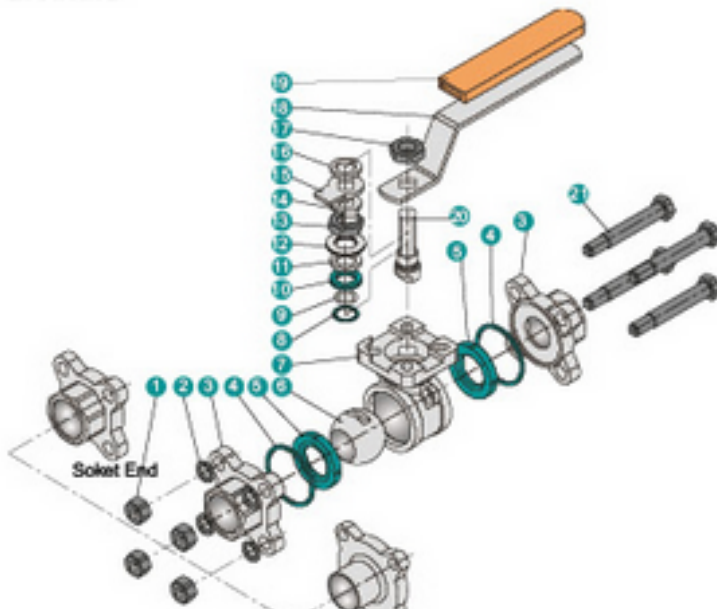
WR-320

1000PSI/PN63

DIMENSION

SIZE	L	Ød	W	H	H1	H2	ØA	ØB	ØC	ØD	□ U	TORQUE N.M	CV
1/2"	70	15	125	60	40	8.5	42	36	6	6	9	5	3.4
3/4"	80	20	125	64	44	8.5	42	36	6	6	9	7	7.2
1"	90	25	155	79.5	52	11	50	42	7	6	11	8	12.5
1-1/4"	110	32	155	87	57	11	50	42	7	6	11	15	20.3
1-1/2"	116	38	195	106	70	14	70	50	8.5	7	14	22	28.5
2"	136	49	195	115	80	15	70	50	8.5	7	14	25	47.5
2-1/2"	185	65	245	136	94.5	18	102	70	11	9	17	50	76
3"	200	76	245	147	103	18	102	70	11	9	17	85	108.5
4"	235	96	300	165	123	19	102	70	11	9	19	113	198

DRAWING



MATERIAL LIST

ITEM	PART NAME	MATERIAL
1	NUT	A194-8
2	SPRING WASHER	SUS304
3	CAP	CF8M CF8
4	BODY GASKET	PTFE
5	BALL SEAT	PTFE R-PTFE
6	BALL	SUS316 SUS304
7	BODY	CF8M CF8
8	THRUST WASHER	PTFE
9	O-RING	VITON
10	STEM PACKING	PTFE
11	GLAND	SUS304
12	ELLEVILLE WASHER	SUS304
13	STOP NUT	A194-8
14	STOP WASHER	SUS304
15	LOCKING WASHER	SUS304
16	WASHER	SUS304
17	STEM NUT	A194-8
18	HANDLE	SUS304
19	HANDLE COVER	PLASTIC
20	STEM	SUS316 SUS316
21	BOLT	A193-B8

Travessa da Prelada, n.º 106 | 4250-379 Porto

GPS N41.169040 W8.630748

Tel: 228 305 348/422 | Tlm: 964 096 068 | Fax: 228305425

www.sertequi.pt | geral@sertequi.pt